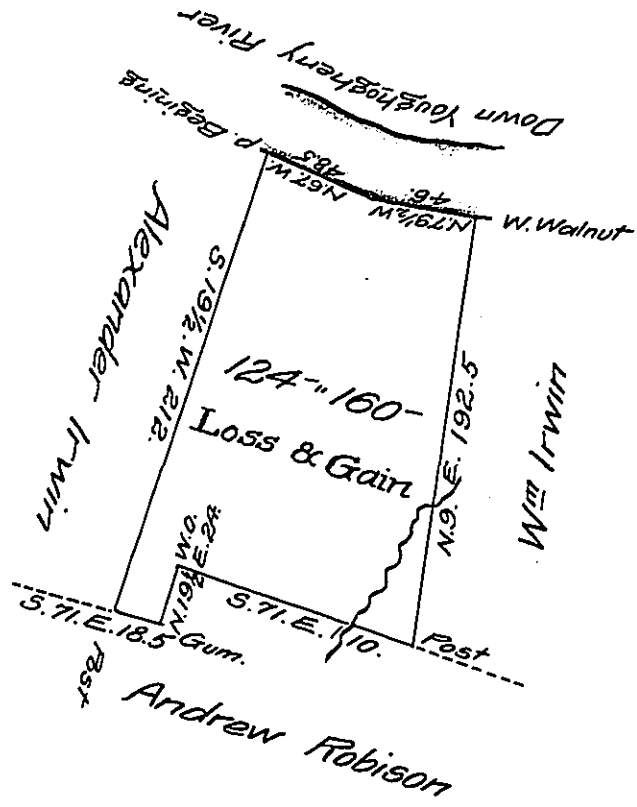


170
H12-396
1-145
8 678



Beginning at a Post thence
S. 19 1/2 W. 212 ps. Post
S. 71. E. 18.5 ps. Gum
N. 19 1/2 E. 24 ps. W.O.
S. 71. E. 110 ps. Post
N. 9. E. 192.5 ps. W. Walnut

Courses down the River
N. 79 1/2 W. 46 offset
N. 67 W. 48.5 to place of
beginning

— Febr. 28th 1810. —

Surveyed unto James Weddel the above Described Tract of Land Containing 124 acres & 160 perches & Allowance of Six per cent. for Roads &c. Situated in Allegheny County Elizabeth Township Surveyed in pursuance of a warrant of 130 as. Dated January 6th. 1810. — Called Loss & Gain

David Cook D.S., A.C.

To Gent^l Andrew Porter Esq. }
S. General of Penn^a }

Lancaster

IN TESTIMONY that the above is a copy of the original remaining on file in the Department of Internal Affairs of Pennsylvania, made conformably to an Act of Assembly approved the 16th day of February 1833, I have hereunto set my hand and caused the Seal of said Department to be affixed at Harrisburg, this fourteenth day of June 1907.

Henry Howell

Secretary of Internal Affairs.